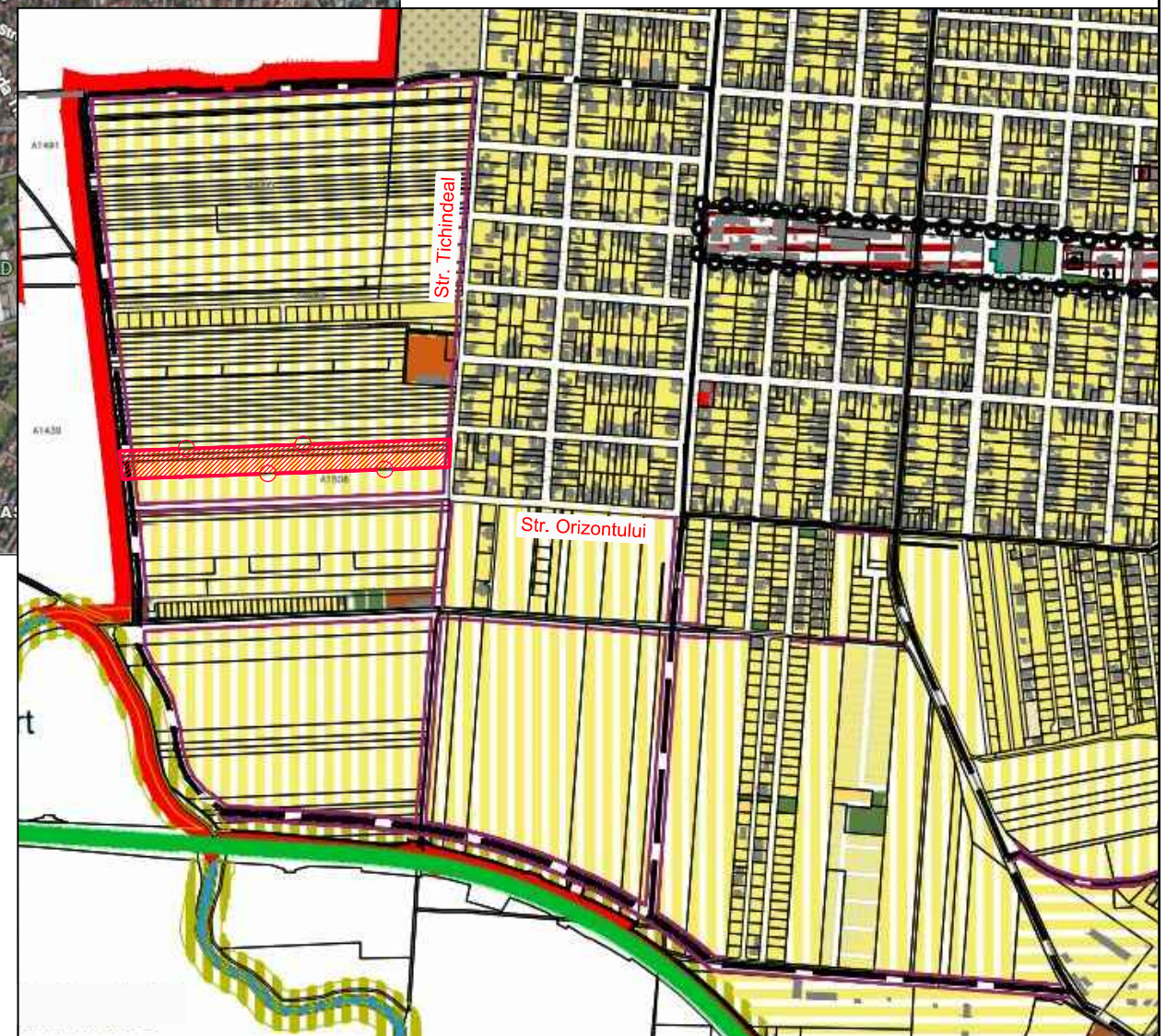








**EXTRAS DIN PUG ARAD
IN CURS DE AVIZARE/ APROBARE**



INCADRARE IN ZONA

-  LIMITA INCINTA PROPU SA SPRE REGLEMENTARE S = 25.000 mp, compusa din teren agricol in extravilan, conf. CF 367588 Arad
-  STRAZI DE CATEGORIA III (COLECTOARE) CE FAC PARTE DIN RETEAUA MAJORA URBANA PROPU SE PRIN PUG ARAD IN CURS DE ACTUALIZARE
-  ALINIAMENTE STRAZI DNOI PROPU SE PRIN PUG ARAD IN CURS DE ACTUALIZARE
-  LIMITA TERITORIULUI INTRAVILAN PROPU SA PRIN PUG ARAD IN CURS DE ACTUALIZARE

PROIECTANT GENERAL
S.C ARHITECTONIC S.R.L.
Sediu: Arad, Str. Oltuz nr. 119a
C.U.I. RO23713160 O.R.C. JO2/682/2008

Beneficiar:
COSTEA GHEORGHE-LEON

Pr. nr.
191/2025

SPECIFICATIE	NUME	SEM NATURA
SEF PROIECT	arh. Doriana BALOGH	
PROIECTAT	arh. Doriana BALOGH	
DESENAT	arh. Doriana BALOGH	

Scara:
1:1.000

Data:
martie 2026

**ZONA REZIDENTIALA SI FUNCTIUNI
COMPLEMENTARE**
Jud. Arad, extravilan Mun. Arad, vest Str. Tichindeal
CF 367588 Arad

FAZA:
**STUDIUL
OPORTUNITATE**

INCADRARE IN ZONA

Plansa nr.
00 A